



STEREO HI-FI

SUPPLEMENT 4 TO
BULLETIN: R75-3

FACTORY PREPARED
TECHNICAL SERVICE DATA

File with Bulletin: R75-3.

SERVICE PUBLICATIONS DEPARTMENT

Entertainment Products Group

700 Ellicott Street - Batavia, N.Y.

This supplement lists all code changes to date on the R75-3,-4 chassis.

CODE	CHASSIS	PANEL CODE	DESCRIPTION OF CHANGE
00	ALL	—	INITIAL PRODUCTION.
01	-3	—	POWER AMPLIFIER OSCILLATION. 1) 33pF, N150 capacitors added from Base to Collector of Q606A,B,C,D on foil side of P/C panel.
01	-4	—	MULTIPLEX SEPARATION DEGRADES WITH TEMPERATURE CHANGE. 1) Cores replaced in T4 and T6.
02	-3	—	CHASSIS IDENTIFICATION ONLY. To provide a means to identify finished goods built with SQ chips with date codes of 7331 and 7332.
02	-4	A	IMPROVED SPEAKER PROTECTION. 1) CB602 replaced by 02-36800-1 relay panel. 2) C629 removed. 3) R640 removed. 4) C632 value changed to 3.3pF. 5) R639 value changed to 220K. 6) R648 value changed to 10K.
02	-4	B	RELAY TRIPS WHEN TUNING ACROSS FM BAND. (02-36800-1 PANEL REVISION). 1) C1204 value changed to 100MFD/15V - new part number is 41-32477-37. NOTE: All CODE A relay panels with this change prior to CODE B are identified by a RED STRIPE through the identification sticker.
03	-3	—	TO COMPLY WITH IHF AND INDUSTRY STANDARDS. 1) BLUE/WHITE, RED/WHITE, BLUE and RED leads reversed on headphone jacks. The industry standard is for LEFT channel audio to the TIP of the headphone plug, and RIGHT channel audio to the RING of the plug.

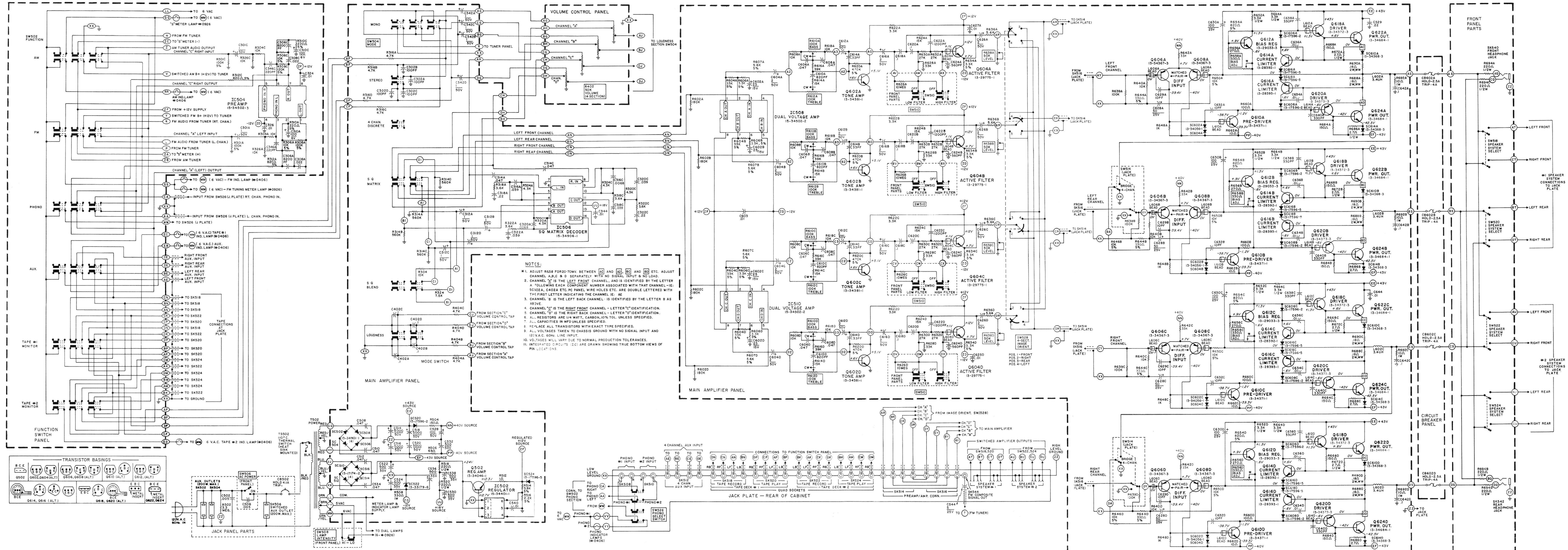
IMPORTANT: Avoid mistakes, order Sylvania parts by part number.

SUPPLEMENT 4 TO BULLETIN: R75-3

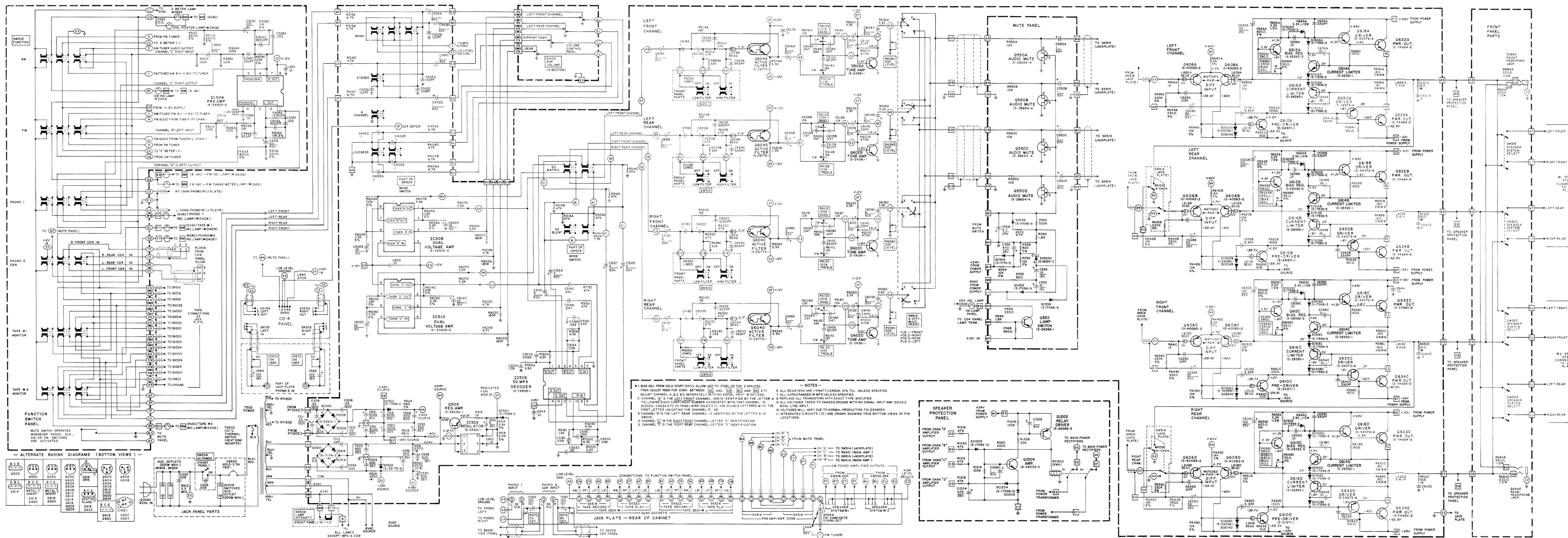
SUPPLEMENT 4 TO BULLETIN: R75-3

CODE	CHASSIS	PANEL CODE	DESCRIPTION OF CHANGE
03	-4	B	<p>POWER AMP. NOISE PICKED UP IN AM MODE.</p> <p>1) C114 value changed to .05, 50V. 2) C529 (.22, 150V) added from amplifier end of +32V buss to ground on foil side of P/C panel. 3) C629 (10pF, NPO) added between Base and Collector of Q606.</p> <p>NOTE: All chassis (regardless of code number) having RED, YELLOW, GREEN, BLUE or any ONE of these stripes, prior code 03, will be the SAME AS THE CODE 03 CHASSIS.</p>
04	-3	—	<p>RF PICK-UP IN PHONO PREAMP.</p> <p>1) C304 removed. 2) C346A (1000pF, Z5P) added between pins No. 2 & 3 of IC504. 3) C346C (1000pF, Z5P) added between pins No. 5 & 6 of IC504.</p> <p>TO ELIMINATE POP WHEN SWITCHING FROM FM TO AM.</p> <p>1) C46 removed. 2) R302A, C removed. 3) R326A, C value changed to 100K. 4) R63 (100K, 5%) added from wire hole L1 to ground. 5) R65 (100K, 5%) added from wire hole R1 to ground. 6) R149 (100K, 5%) added from square wire pin Z to ground. 7) R301A (100K, 5%) added from + end of C301A to ground. 8) R301C (100K, 5%) added from + end of C301C to ground.</p> <p>TO ELIMINATE POP WHEN SWITCHING FROM FM TO PHONO.</p> <p>1) C72 value changed to 1MFD/50V. 2) C74 value changed to 1MFD/50V.</p> <p>TO FACILITATE BOARD ASSEMBLY.</p> <p>1) C108 (10MFD/15V Electrolytic) added from junction of R112, R114 to ground. 2) Q604 part number changed to 13-29775-1.</p> <p>TO REDUCE SWITCH POP.</p> <p>1) C604 value changed to 2MFD/50V. 2) R314 value changed to 47K, 5%. 3) R607 value changed to 5.6K, 5%. 4) R620 value changed to 470K. 5) R634 value changed to 3.3K, 5%.</p>
04	-4	B	<p>FET RELIABILITY IMPROVEMENT.</p> <p>1) Q2 part number changed to 13-34378-3.</p>

SCHMATIC DIAGRAM (R75-3 AMP)



SCHMATIC DIAGRAM (R75-4 AMP)



1. BIAS ADJ. FROM COLD START (20") ALLOW UNIT TO STABILIZE FOR 2 MINUTES. THEN ADJUST BIAS FOR DOWN BETWEEN (10) AND (20) (10) AND (20) ETC. ADJUST CHANNEL A, B, C, D SEPARATELY WITH NO SIGNAL INPUT & NO LOAD.
 2. CHANNEL "C" IS THE LEFT FRONT CHANNEL, AND IS IDENTIFIED BY THE LETTER "A".
 3. CHANNEL "D" IS THE LEFT REAR CHANNEL, AND IS IDENTIFIED BY THE LETTER "B".
 4. CHANNEL "A" IS THE RIGHT FRONT CHANNEL, LETTER "C" IDENTIFICATION.
 5. CHANNEL "B" IS THE RIGHT REAR CHANNEL, LETTER "D" IDENTIFICATION.
 6. ALL RESISTORS ARE 1/4WATT, CARBON, 10% TOL. UNLESS SPECIFIED.
 7. ALL CAPACITANCES IN MFD UNLESS SPECIFIED.
 8. REPLACE ALL TRANSISTORS WITH EXACT TYPE SPECIFIED.
 9. ALL VOLTAGES TAKEN TO CHASSIS GROUND WITH NO SIGNAL INPUT AND 100V AC 60Hz LINE INPUT.
 10. VOLTAGES WILL VARY DUE TO NORMAL PRODUCTION TOLERANCES.
 11. INTEGRATED CIRCUITS (IC) ARE DRAWN SHOWING TRUE BOTTOM VIEWS OF PIN LOCATIONS.

ALTERNATE BASING DIAGRAMS (BOTTOM VIEWS)

Q502	Q503	Q504	Q505	Q506	Q507	Q508	Q509	Q510	Q511	Q512	Q513	Q514	Q515	Q516	Q517	Q518	Q519	Q520	Q521	Q522	Q523	Q524	Q525	Q526	Q527	Q528	Q529	Q530	Q531	Q532	Q533	Q534	Q535	Q536	Q537	Q538	Q539	Q540	Q541	Q542	Q543	Q544	Q545	Q546	Q547	Q548	Q549	Q550	Q551	Q552	Q553	Q554	Q555	Q556	Q557	Q558	Q559	Q560	Q561	Q562	Q563	Q564	Q565	Q566	Q567	Q568	Q569	Q570	Q571	Q572	Q573	Q574	Q575	Q576	Q577	Q578	Q579	Q580	Q581	Q582	Q583	Q584	Q585	Q586	Q587	Q588	Q589	Q590	Q591	Q592	Q593	Q594	Q595	Q596	Q597	Q598	Q599	Q600	Q601	Q602	Q603	Q604	Q605	Q606	Q607	Q608	Q609	Q610	Q611	Q612	Q613	Q614	Q615	Q616	Q617	Q618	Q619	Q620	Q621	Q622	Q623	Q624	Q625	Q626	Q627	Q628	Q629	Q630	Q631	Q632	Q633	Q634	Q635	Q636	Q637	Q638	Q639	Q640	Q641	Q642	Q643	Q644	Q645	Q646	Q647	Q648	Q649	Q650	Q651	Q652	Q653	Q654	Q655	Q656	Q657	Q658	Q659	Q660	Q661	Q662	Q663	Q664	Q665	Q666	Q667	Q668	Q669	Q670	Q671	Q672	Q673	Q674	Q675	Q676	Q677	Q678	Q679	Q680	Q681	Q682	Q683	Q684	Q685	Q686	Q687	Q688	Q689	Q690	Q691	Q692	Q693	Q694	Q695	Q696	Q697	Q698	Q699	Q700	Q701	Q702	Q703	Q704	Q705	Q706	Q707	Q708	Q709	Q710	Q711	Q712	Q713	Q714	Q715	Q716	Q717	Q718	Q719	Q720	Q721	Q722	Q723	Q724	Q725	Q726	Q727	Q728	Q729	Q730	Q731	Q732	Q733	Q734	Q735	Q736	Q737	Q738	Q739	Q740	Q741	Q742	Q743	Q744	Q745	Q746	Q747	Q748	Q749	Q750	Q751	Q752	Q753	Q754	Q755	Q756	Q757	Q758	Q759	Q760	Q761	Q762	Q763	Q764	Q765	Q766	Q767	Q768	Q769	Q770	Q771	Q772	Q773	Q774	Q775	Q776	Q777	Q778	Q779	Q780	Q781	Q782	Q783	Q784	Q785	Q786	Q787	Q788	Q789	Q790	Q791	Q792	Q793	Q794	Q795	Q796	Q797	Q798	Q799	Q800	Q801	Q802	Q803	Q804	Q805	Q806	Q807	Q808	Q809	Q810	Q811	Q812	Q813	Q814	Q815	Q816	Q817	Q818	Q819	Q820	Q821	Q822	Q823	Q824	Q825	Q826	Q827	Q828	Q829	Q830	Q831	Q832	Q833	Q834	Q835	Q836	Q837	Q838	Q839	Q840	Q841	Q842	Q843	Q844	Q845	Q846	Q847	Q848	Q849	Q850	Q851	Q852	Q853	Q854	Q855	Q856	Q857	Q858	Q859	Q860	Q861	Q862	Q863	Q864	Q865	Q866	Q867	Q868	Q869	Q870	Q871	Q872	Q873	Q874	Q875	Q876	Q877	Q878	Q879	Q880	Q881	Q882	Q883	Q884	Q885	Q886	Q887	Q888	Q889	Q890	Q891	Q892	Q893	Q894	Q895	Q896	Q897	Q898	Q899	Q900	Q901	Q902	Q903	Q904	Q905	Q906	Q907	Q908	Q909	Q910	Q911	Q912	Q913	Q914	Q915	Q916	Q917	Q918	Q919	Q920	Q921	Q922	Q923	Q924	Q925	Q926	Q927	Q928	Q929	Q930	Q931	Q932	Q933	Q934	Q935	Q936	Q937	Q938	Q939	Q940	Q941	Q942	Q943	Q944	Q945	Q946	Q947	Q948	Q949	Q950	Q951	Q952	Q953	Q954	Q955	Q956	Q957	Q958	Q959	Q960	Q961	Q962	Q963	Q964	Q965	Q966	Q967	Q968	Q969	Q970	Q971	Q972	Q973	Q974	Q975	Q976	Q977	Q978	Q979	Q980	Q981	Q982	Q983	Q984	Q985	Q986	Q987	Q988	Q989	Q990	Q991	Q992	Q993	Q994	Q995	Q996	Q997	Q998	Q999	Q1000
------	------	------	------	------	------	------	------	------	------	------	------	------	------	------	------	------	------	------	------	------	------	------	------	------	------	------	------	------	------	------	------	------	------	------	------	------	------	------	------	------	------	------	------	------	------	------	------	------	------	------	------	------	------	------	------	------	------	------	------	------	------	------	------	------	------	------	------	------	------	------	------	------	------	------	------	------	------	------	------	------	------	------	------	------	------	------	------	------	------	------	------	------	------	------	------	------	------	------	------	------	------	------	------	------	------	------	------	------	------	------	------	------	------	------	------	------	------	------	------	------	------	------	------	------	------	------	------	------	------	------	------	------	------	------	------	------	------	------	------	------	------	------	------	------	------	------	------	------	------	------	------	------	------	------	------	------	------	------	------	------	------	------	------	------	------	------	------	------	------	------	------	------	------	------	------	------	------	------	------	------	------	------	------	------	------	------	------	------	------	------	------	------	------	------	------	------	------	------	------	------	------	------	------	------	------	------	------	------	------	------	------	------	------	------	------	------	------	------	------	------	------	------	------	------	------	------	------	------	------	------	------	------	------	------	------	------	------	------	------	------	------	------	------	------	------	------	------	------	------	------	------	------	------	------	------	------	------	------	------	------	------	------	------	------	------	------	------	------	------	------	------	------	------	------	------	------	------	------	------	------	------	------	------	------	------	------	------	------	------	------	------	------	------	------	------	------	------	------	------	------	------	------	------	------	------	------	------	------	------	------	------	------	------	------	------	------	------	------	------	------	------	------	------	------	------	------	------	------	------	------	------	------	------	------	------	------	------	------	------	------	------	------	------	------	------	------	------	------	------	------	------	------	------	------	------	------	------	------	------	------	------	------	------	------	------	------	------	------	------	------	------	------	------	------	------	------	------	------	------	------	------	------	------	------	------	------	------	------	------	------	------	------	------	------	------	------	------	------	------	------	------	------	------	------	------	------	------	------	------	------	------	------	------	------	------	------	------	------	------	------	------	------	------	------	------	------	------	------	------	------	------	------	------	------	------	------	------	------	------	------	------	------	------	------	------	------	------	------	------	------	------	------	------	------	------	------	------	------	------	------	------	------	------	------	------	------	------	------	------	------	------	------	------	------	------	------	------	------	------	------	------	------	------	------	------	------	------	------	------	------	------	------	------	------	------	------	------	-------